



Street Smart™

A Real-Time Crime
Information Solution



Keep Officers Informed and Safe

Law enforcement is using private-sector technology to reduce crime and improve community relations. Instead of relying on handwritten notes and waiting for information, they harness crowd-sourcing and real-time tools to enable an important process known as "sense-making."

This data sharing empowers field officers to make informed decisions and respond more effectively. Our platform gives officers the ability to collaborate, connect-the-dots faster and leverage data for better case management:

▼
Map Viewer

▼
Crime Connector

▼
Bulletin Management

▼
Crime-Fighting Discussion Board

▼
Case Management

A red pushpin is stuck into a map, symbolizing location and data. The map shows various streets and landmarks, including 'Collier Heights Plaza Shopping Center', 'Luther King Jr Blvd', and 'KFC'. The background is a blurred map with a blue overlay.

Street Smart™

A Versaterm company

Real-time crime-fighting solution
that delivers results

Equip your officers with the sophisticated technology and critical resources they need to fight crime. This state-of-the-art tool provides real-time data to keep your force informed and protected as they patrol the streets.

Officer-driven to provide essential facts about incidents and crime patterns in your area, Street Smart™ goes above and beyond the standard CAD and RMS search by supplying data feeds, maps, discussions, bulletins, and case management tools. It is browser accessible on any Android or iOS device and on Mobile Computer Terminals (MDT) in the patrol vehicle.

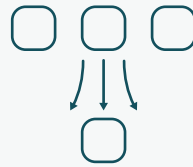
Ensure Informed Response

Enhance situational awareness and safety by arming officers with critical, real-time crime information while responding to emergencies



Search Elasticity

Easily search through and sort entered data, providing an additional mechanism for filtering information



Full API

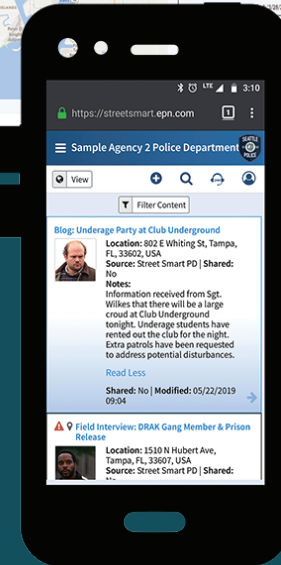
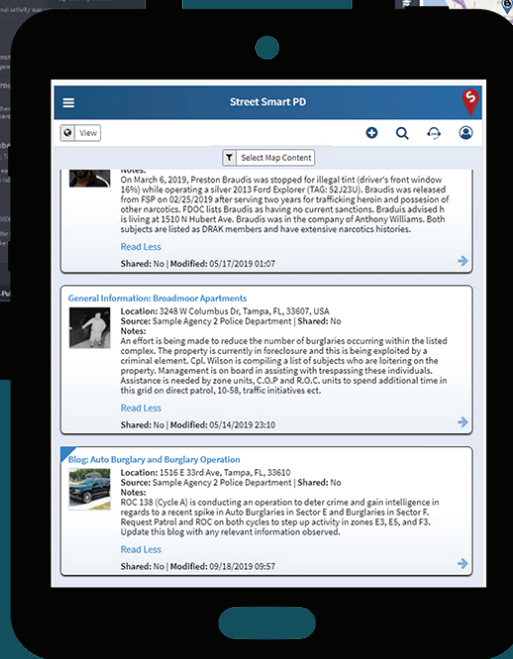
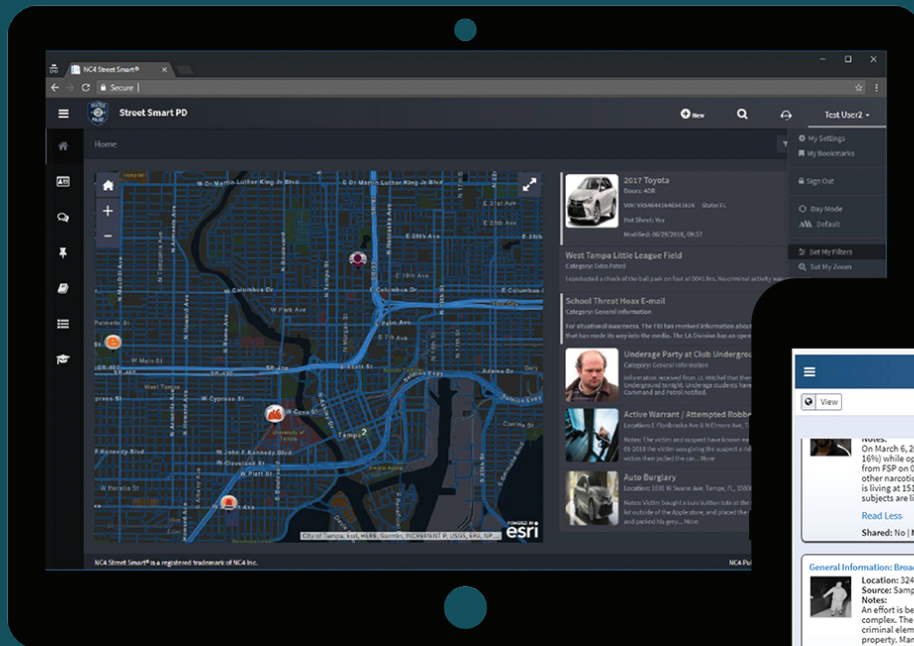
Allows easy integration into data systems or existing RMS and CAD systems



Mobile Capability

With mobile access, responders have better, faster information for crucial decision-making

Any Device. Anywhere. Anytime.



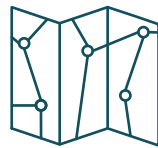
Map Viewer

More effectively visualize emerging trends and patterns to solve crimes faster and keep responders safe while patrolling



Intuitive Labeling

Color-coded dots, customizable icons and time slice views let you organize and categorize information



Maximize Accuracy

Esri-based map viewer leverages commercial & organizational maps to ensure data is 100% accurate



Strategic Personalization

Users can set their profile to save zoom settings and set default displayed map layers to visualize emerging trends and patterns

Crime Connector

Ensure all relevant information is stored in one, easily accessible location, making it easier, and faster to solve crimes



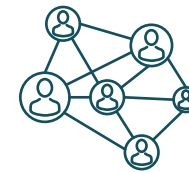
Collect Data Efficiently

All info about people, places, activities, and assets in the system is stored in one end user-accessible location



Search in Real-Time

Officers can easily mine relevant data in real time to identify associations that are key to solving cases



Make Relevant Connections

A person can be mentioned in a bulletin, a discussion, a feed, or a crime, linking all the associated records together

Bulletin Management

More effectively visualize emerging trends and patterns to solve crimes faster and keep responders safe while on patrol



Access Real-Time Data

Provide officers with immediate access to real-time data in an easy-to-browse location to sort information by time and relevance



Streamline Communication

Allow officers to create, edit, comment on, and view relevant bulletins surrounding crime alerts, new intelligence, officer safety, and those from other agencies

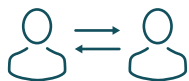


Improve Awareness

Officers receive real-time alerts on new bulletins, such as the notification of an escaped suspect, or a situation that could affect patrol officer safety

Crime-Fighting Discussion Board

Facilitate teamwork that brings information to an officer's attention instantly to increase communication and solve cases



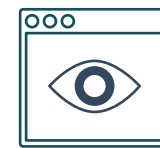
Enhance Information Sharing

Officers can post original topics or contribute additional information to existing threads to ensure all responders are kept up-to-date



Connect With Other Agencies

Information can be shared with other agencies and other agencies can comment on any discussion, allowing for cross-jurisdictional collaboration



Multi-View Capabilities

Discussions can be viewed in card style, data grid, or displayed on a map, allowing officers to view the information as they see fit

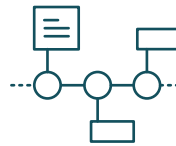
Case Management

Lower both agency and community risk by building relevant information at the right time for the right reason



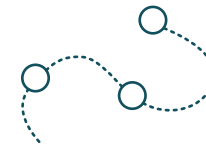
Leverage Partnerships

Harness continuous case communication and management between both internal and external agency partners



Purpose-Driven Collaboration

Facilitate real-time and actionable collaboration from the time-of-offense to time-of-solution



Track Crime Patterns

Create a knowledge trail to help prevent and solve future crimes typically involving the same MO and offenders

Versaterm



About Us

Versaterm is a global public safety solutions company helping agencies transform their organizations by providing innovative solutions, expertise, and an unwavering dedication to customer service. Formed in 1977, we are on a journey to build an ecosystem that will enhance community safety by creating purposeful integrations across the public safety spectrum. We deliver intuitive tools developed for public safety agencies, forensic labs, court systems, schools, and other institutions. Our selective growth strategy focuses on improving customer and user workflows for more efficient and effective operations, leading to better service and more just outcomes. For more information, visit [versaterm.com](https://www.versaterm.com), [LinkedIn](#), or [Twitter](#).