

>>> Product Highlights

- Enables users to uncover trends, make comparisons, gain insights, and formulate decisions in a short period of time.
- Consists of the Versaterm Data mart and Cognos Business Intelligence tools.
- Simple to use tool that employs very sophisticated visualization techniques.
- COMPSTAT-like Reporting.
- Allows users to create dynamic reports from multiple dimensions by pointing, clicking, and dragging information on the screen.
- Integrates analytic and visualization tools.
- Provides a view of summarized data with the ability to drill down to the detailed level.

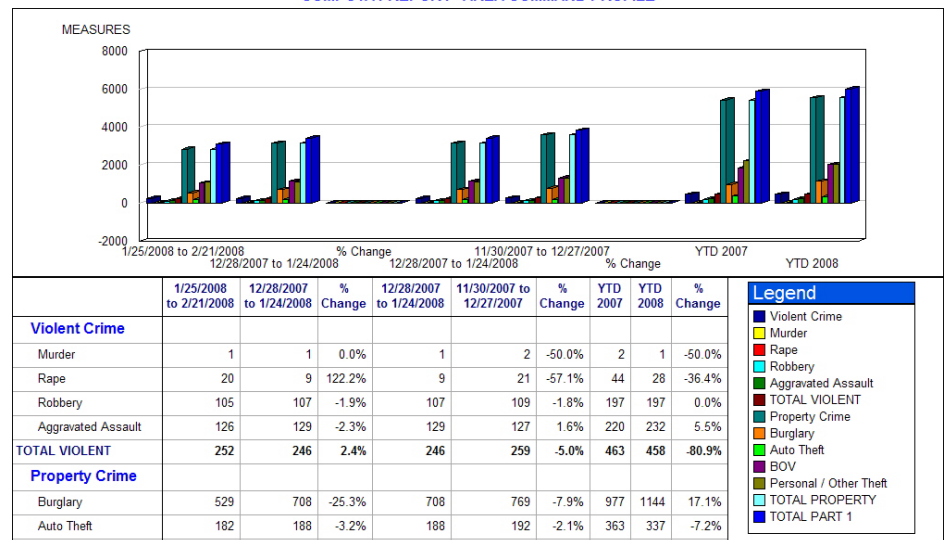
VCAP (Versadex Crime Analysis Package)

The methods and processes used for crime analysis and reporting are evolving and in the past five years the analytical tools available to Crime Analysts have improved significantly. Today, reporting tools allow the professional Crime Analyst to progress from reporting with single-dimensional spreadsheets and disconnected databases to analyzing real-time multi-dimensional data sources using Business Intelligence (BI) practices.

Business Intelligence (BI) is a process for professionally gathering, processing, and disseminating decision-making information to senior management. BI is a broad category of applications and technologies for gathering, storing, analyzing, and providing access to data to help enterprise users make better business decisions. BI tools help your police department make sense of all that information.

For the Crime Analyst, the Versadex Crime Analysis Package (VCAP) utilizes BI tools to enable three types of crime analysis reporting: strategic, operational, and forecasting. Utilizing the analytical tools of the VCAP component of Versadex, the intelligence cycle for gathering and analyzing crime data for crime trend, pattern identification, or series detection is both enhanced and minimized. VCAP provides visual investigative analysis tools to prepare such reporting as time event charting and crime analysis statistics for forecasting and predicting crime trends.

COMPSTAT REPORT - AREA COMMAND PROFILE



CompStat Report

VCAP was developed in a team effort between police managers, senior management, crime analysts, and Versaterm. VCAP uses the Versadex Data mart (VDM) as its data source. The VDM database is automatically populated and kept in sync with the Versadex RMS database. The VDM is the foundation that VCAP, MyVersadex, Link Analysis, ESRI-based mapping applications, and other ODBC compliant applications will use for crime analysis and dynamic reporting.

For analytical processing, we have chosen to use the BI industry leading BI applications provided by Cognos Corporation. Cognos PowerPlay, the core analytical tool for VCAP, uses multi-dimensional "cubes" of data to present

*The best public safety software...
but don't just listen to us, listen to our clients - we do!*



high level analysis reports while supporting near limitless “drill-down” and “drill-through” capability—“dynamic reporting”. Multidimensional analysis with PowerPlay is a process of extracting and evaluating multiple aspects of available crime information, focusing on key indicators for the purpose of decision support. With VCAP, your police data is organized in a way that allows you to spend more time on value added analysis, rather than on data retrieval and presentation. Multidimensional analysis will help analysts, users, and management to understand the data and decrease time required to make decisions. You can find answers to your questions by navigating through the data to uncover trends, discover opportunities, and expose weaknesses.

For example, you can create a report that shows the number of offenses for each year by offense group and by geographic area. You can slice and dice information to show offense counts over the last two months for assault offenses by time of day.

As you grow more familiar with the visual analytical tools, you can develop more complex reports that allow you to report and analyze crime over multiple dimensions. You can nest age ranges by specific crime types by the time of day and day of week and by specific geographic locations.

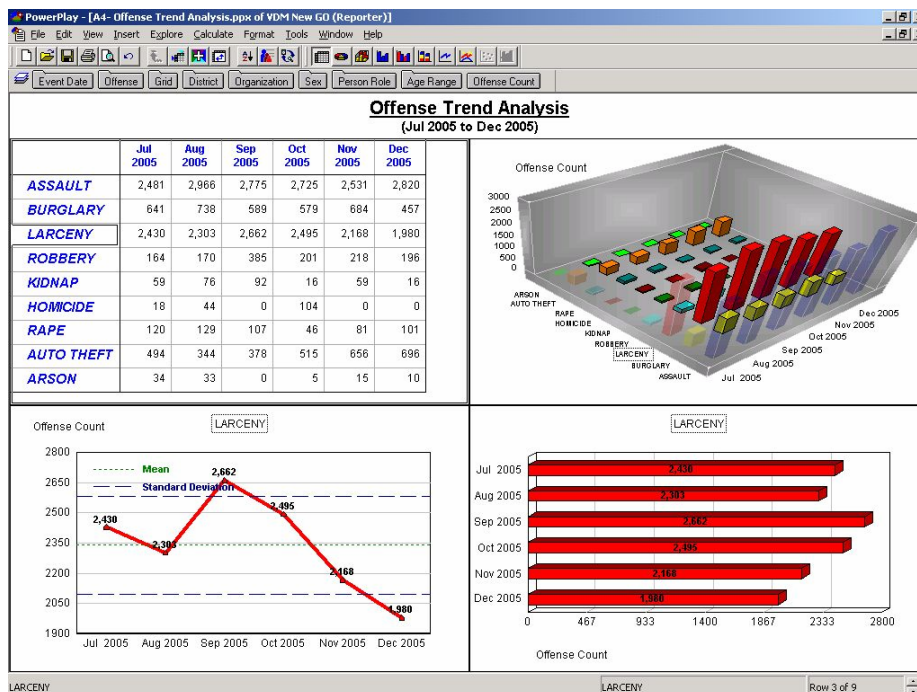
Further, you can create dimensions that do not exist in your source data and link related data from other systems. For instance, you can merge HR information, such as years of service, training hours, etc. to analyze time-on report.

The base VCAP component permits you to run PowerPlay basic reports that Versaterm provides, and either print those reports, create a PDF for distribution, and/or transform reports into HTML for posting on a website. With appropriate training you can generate additional PowerPlay reports and even generate your own “multi-dimensional cubes” for a different reporting focus.

You can extend the reporting and analytical capabilities across the organization and, in fact, migrate from our core VCAP component to an enterprise, web server based implementation of Cognos. All of these extensions/products are off the shelf Cognos products and are widely used by thousands of businesses globally.

Versaterm is providing the BI foundation to satisfy a significant portion of your crime analysis needs. However, if it does not, then this foundation will allow you to expand into a much larger implementation while benefiting from the initial VCAP component.

Once your department is ready to start on the roadmap to success with VCAP, Versaterm will work with you to ensure your success in the future of crime analysis.



Offense Trend Analysis report

*The best public safety software...
but don't just listen to us, listen to our clients - we do!*

