

Online maps

>>>Online map features

- *Inexpensive, you can afford to equip all CAD stations.*
- *Multi-layer with ability to develop custom layers.*
- *Multi-jurisdictional and different layers are available by service type.*
- *Optional validation and layer creation tool (if the GIS cannot provide emergency layers).*
- *Optional mobile map display uses the same map layers as CAD.*
- *Can dynamically display all calls, their status, and priority (if not dispatched).*
- *Can optionally dynamically display all AVL equipped units and their status.*
- *AVL equipped vehicles can use their in-car map to see their own location, the call location, and the location of other units.*
- *Can graphically replay events (e.g., a high speed chase) on the map.*

Another optional feature made possible by today's technological advances is the ability to display municipal maps at varying levels of resolution. Versadex CAD can display the location of a call on the map at the touch of a key. Maps, or portions of maps, from a high level perspective (jurisdictions, beats, etc.) down to individual buildings can be displayed and they can be overlaid with symbols depicting things as roadblocks, stakeouts, officer locations, emergency vehicles or any other object with special meaning.

Using digitized maps supplied by your city authorities, you can create and access geo-statistical information as an integral part of your operation. You can pan and zoom in or out of any area on the map as shown below.

The Versadex CAD MapViewer/LT is highly configurable. You can select what map layers should be visible at specific resolutions as well as set properties for each layer, such as colors, labels and borders.

You can also overlay the maps with special purpose icons to indicate the location(s) of officers, equipment, parade routes or anything you want to highlight during special operations planning. Using the special 'Info Tool', you can also click on any number of active points on the map to display further information on the selected call. The accompanying map shows a higher level display with a parade route highlighted.

An optional, separate dynamic layer, which depicts both queued calls (color coded by priority) and active calls (shows responding units, color coded by Status) is also available. If GPS/AVL is supported on the mobile units, then the dynamic tracking layer can also be used to track individual unit locations and can even be projected to a large overhead or to a communication center level projection map display.

MapViewer/LT was developed using the MapObjects tool kit from ESRI, an international world leader in online mapping solutions, and is compatible with numerous GIS products available on the market today. MapObjects is a companion tool to ESRI's full-scale GIS products (ArcView and ArcInfo) which provide powerful GEO profiling facilities.

With the ArcView desktop mapping product, police crime analysts will also appreciate the ability to analyze statistical information based on crime types and where they were committed. This information can be displayed both on maps and in reports. Using this feature, you can create queries such as '*rank the number, by district, of Break&Enters with violence perpetrated between January 1st and March 31st*'. Responses are easily obtained with a few keystrokes and the results can be displayed on a map and/or report.

*The best public safety software...
but don't just listen to us, listen to our clients - we do!*



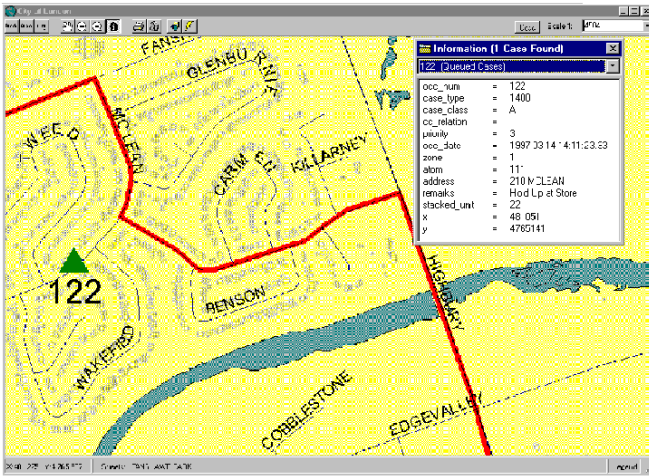
VERSATERM

2300 Carling Avenue Ottawa, Ontario, Canada K2B 7G1

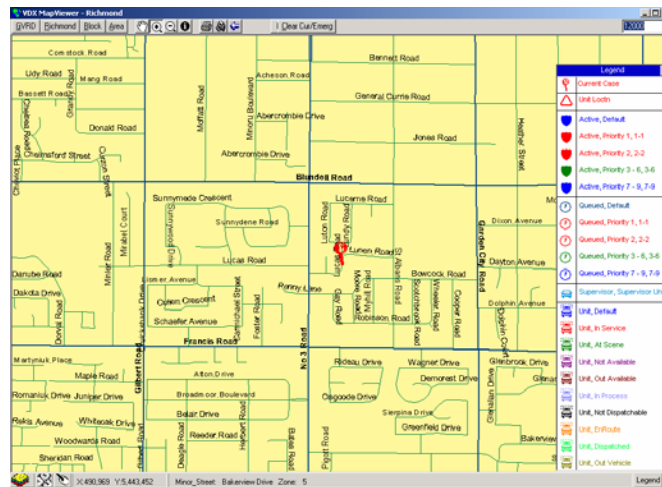
PHONE: 613-820-0311 FAX: 613-596-5884

EMAIL: info@versaterm.com www.versaterm.com

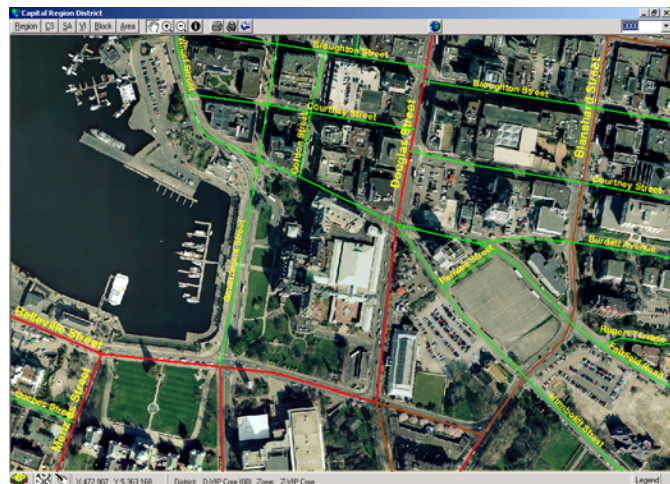




An online map with a highlighted parade route



An online map displaying the location of the current call



An air photo displaying addresses

*The best public safety software...
but don't just listen to us, listen to our clients - we do!*

